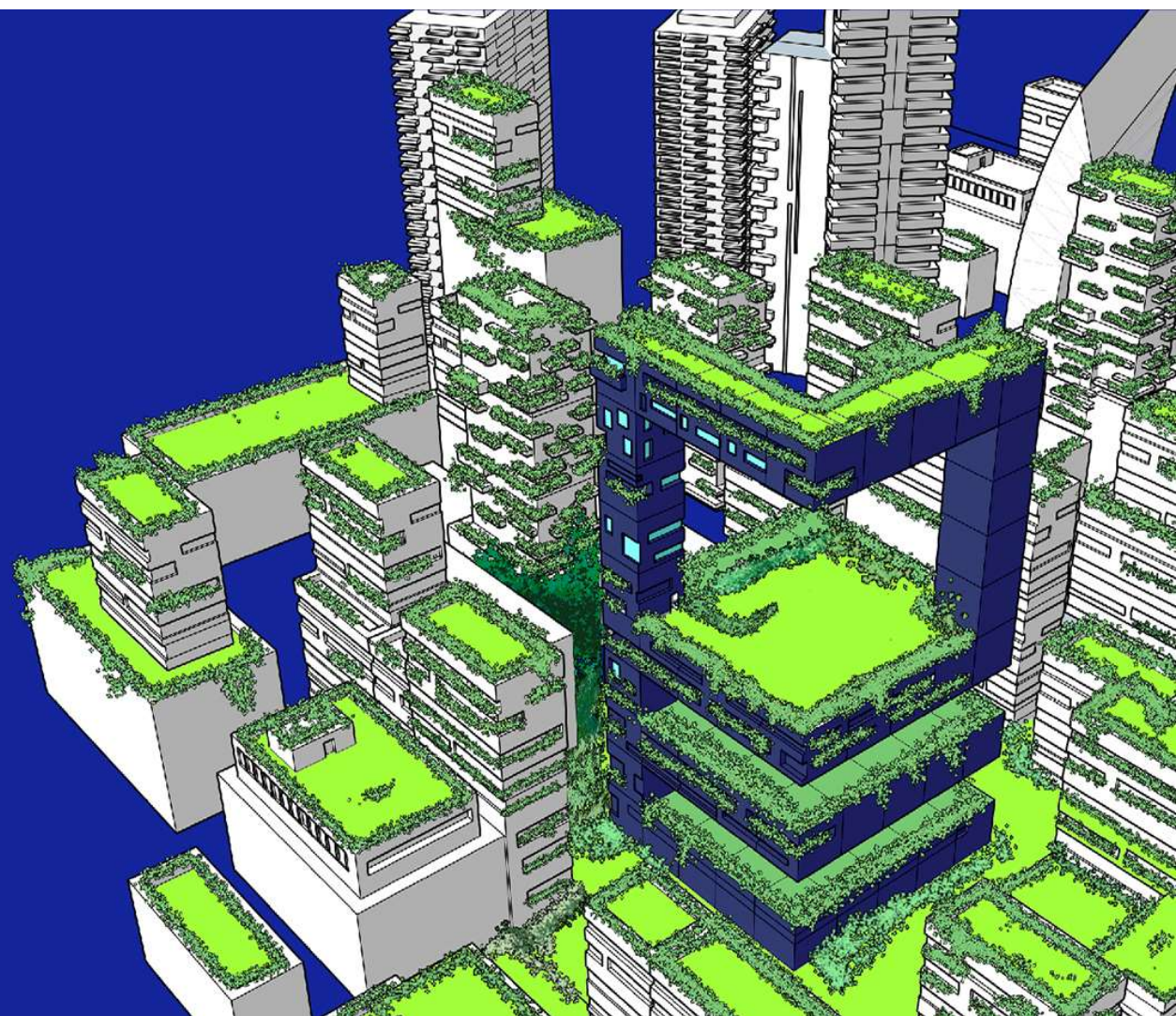




FOR
WORK ~~IN~~ PROGRESS.

15_18 Nov 2023
Fieramilano Rho



PARTECIPATION PROPOSAL

WORK ^{FOR} ~~IN~~ PROGRESS.

“Work for progress” is the claim chosen by the event to represent the vision of the future of the sector, with the choice of colors and visuals that immediately refer to the theme of sustainability, along a path that - originating from ME - will lead to the only form of progress for the individual and the community.

Sustainability and Innovation: ME 2023's drivers

Energy requalification today no longer responds only to the objectives of the 2030 Agenda but has become a contingent and widely shared need.

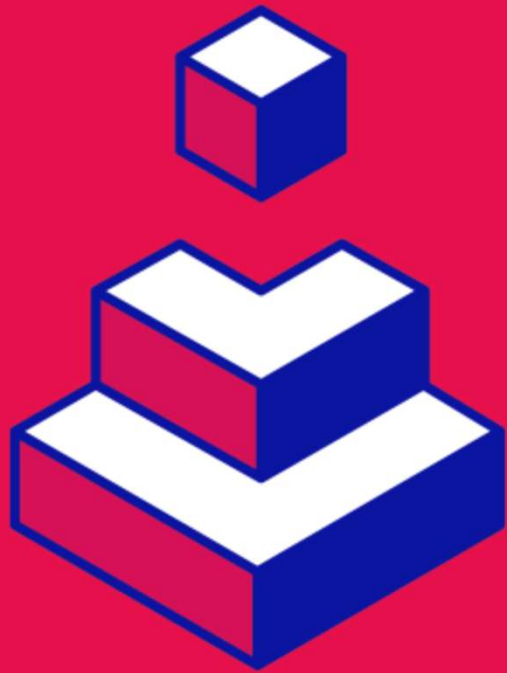
Those who design, qualify, build today are fully aware of the impact that their business will have on the future of individuals and communities.

A more sustainable built environment, capable of limiting the consumption of resources and even contributing to the energy transition is the shared goal that has pushed towards new products and innovative solutions.

MADE expo captures the paradigm shift and evolves by giving space to the themes of Sustainability and Innovation in the two Construction and Building Envelope exhibitions.



A new specialized platform, two exhibitions

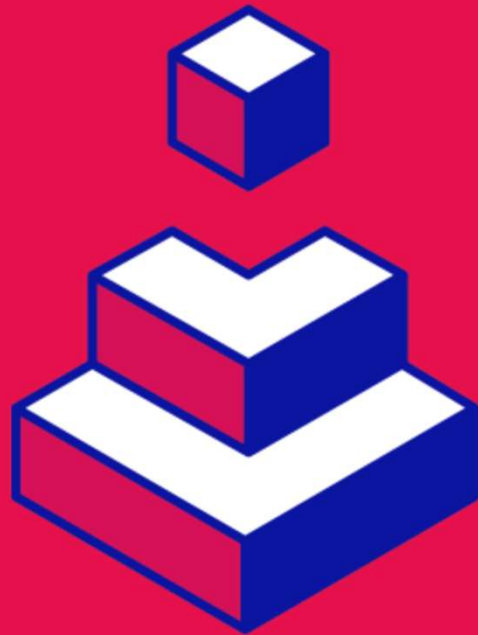


CONSTRUCTION



BUILDING ENVELOPE

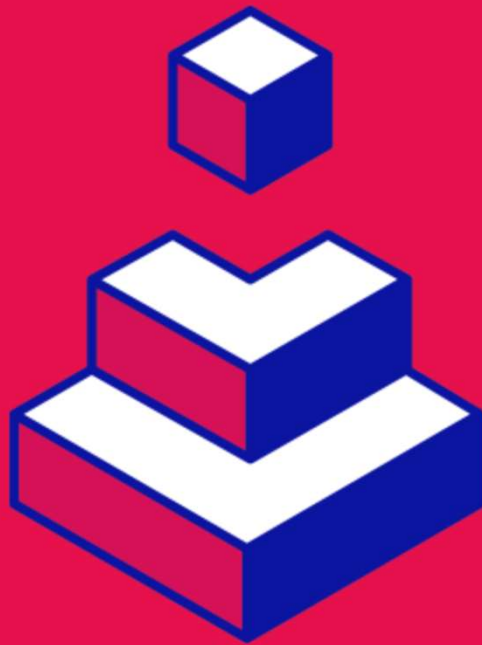
CONSTRUCTION



CONSTRUCTION

From design to living comfort: companies and designers engaged in new constructions or redevelopment interventions, find in Construction the tools, products and solutions to design and build safe buildings thanks to innovative construction systems, performing thanks to traditional and high-tech materials, responding to tastes and lifestyles thanks to finishes with high customization potential. For a beautiful, safe and sustainable built environment.

CONSTRUCTION focus on



CONSTRUCTION

- Planning, BIM and Software- Services
- Structures and building systems
- Civil engineering and Infrastructures
- Construction site tools and safety
- Energy requalification, insulation
• and comfort
- Interior and exterior finishes and coatings
- Building/utilities integration

BUILDING ENVELOPE

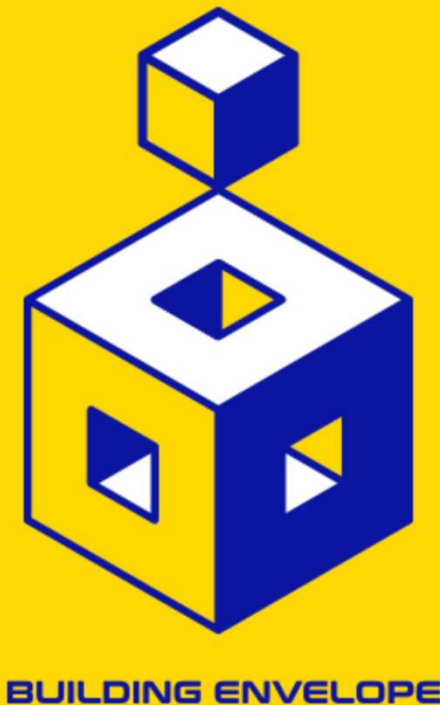
The building envelope is responsible for defining the performance of the buildings, their accessibility, their permeability to light. The exhibition Building Envelope dedicated to the entire chain of doors and windows and the technical components of the envelope makes the most innovative solutions available for companies, designers and window makers to combine energy requalification and comfort. The communication between indoor and outdoor spaces finds new forms and living areas move outdoors with new proposals.



BUILDING ENVELOPE

BUILDING ENVELOPE focus on

- Building envelope, facades and roofs
- Fenestration, Windows and Doors
- Glazing
- Components, Accessories and Hardware
- Closures, Sunshading and Automation
- Outdoor, Sunscreens and Anti insect Screens
- Machinery and production equipment for windows



Initiatives, events, congresses



At ME 2023 **the exhibition area and training schedule** are strongly integrated to highlight how innovation contributes to sustainability.

The training program and the conferences will also be inspired by the verticality and specialization of the Construction and Building Envelope exhibitions, to offer each target - **planners, technicians, construction and maintenance companies, window and door manufacturers, craftsmen, retailers and distributors, wholesalers, professional studios and showrooms , representatives of the public administration and trade associations, schools and universities** - the best update proposals.

The scheduled conferences, held by international consultants and speakers, will be developed into specific paths focusing on **market trends** and prospects, as well as on the **progress of projects** related to the PNRR (National Recovery and Resilience Plan).

New life also for the **ME Awards** which, passing through a dedicated exhibition at the fair, a technical jury and the thousands of followers who follow the event on social channels, will award to the most innovative companies in the Construction and Building envelope exhibitions, with special attention on sustainable innovations.

EXHIBITION AREA PROPOSAL – up to 49 sqm



EXHIBITION AREA and FLAT RATE SERVICES:

- Indoor Exhibition Area: 165.00 €/sqm
- Outdoor Exhibition Area: 59.00 €/sqm
- Indoor Area for Earth-moving Machinery : 59.00 €/sqm
- Mezzanine Area: 95.00 €/sqm

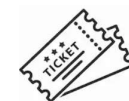
- Registration fee: 800.00 €
- Fee for Italian Trade marks and Represented Companies: 500.00 €
- Fee for exceeding max height (3.50 mt.):
 - Only stand fitting 500.00 €
 - Stand fitting + Logos 800.00 €
- Mandatory flat rate services: 7.50 €/sqm

The upon indicated rates area available for registrations completed by
30 September 2022

Mandatory **flat rate services** include:



Basic cleaning of your booth for all the exhibition days



6 Exhibitor badges



Customer invitations



1 Parking pass



10 kW daily electricity consumption in your booth



EXHIBITION AREA PROPOSAL – from 50 to 99 sqm



EXHIBITION AREA and FLAT RATE SERVICES:

- Indoor Exhibition Area: 165.00 €/sqm
- Outdoor Exhibition Area: 59.00 €/sqm
- Indoor Area for Earth-moving Machinery : 59.00 €/sqm
- Mezzanine Area: 95.00 €/sqm

- Registration fee: 800.00 €
- Fee for Italian Trade marks and Represented Companies: 500.00 €
- Fee for exceeding max height (3.50 mt.):
 - Only stand fitting 500.00 €
 - Stand fitting + Logos 800.00 €
- Mandatory flat rate services: 7.50 €/sqm

Mandatory **flat rate services** include:



- Basic cleaning of your booth for all the exhibition days



18 Exhibitor badges



Customer invitations



2 Parking pass



- 10 kW daily electricity consumption in your booth

The upon indicated rates area available for registrations completed by
30 September 2022



EXHIBITION AREA PROPOSAL – from 100 to 199 sqm



EXHIBITION AREA and FLAT RATE SERVICES:

- Indoor Exhibition Area: 165.00 €/sqm
- Outdoor Exhibition Area: 59.00 €/sqm
- Indoor Area for Earth-moving Machinery : 59.00 €/sqm
- Mezzanine Area: 95.00 €/sqm

- Registration fee: 800.00 €
- Fee for Italian Trade marks and Represented Companies: 500.00 €
- Fee for exceeding max height (3.50 mt.):
 - Only stand fitting 500.00 €
 - Stand fitting + Logos 800.00 €
- Mandatory flat rate services: 7.50 €/sqm

Mandatory **flat rate services** include:



- Basic cleaning of your booth for all the exhibition days



24 Exhibitor badges



Customer invitations



3 Parking pass



- 10 kW daily electricity consumption in your booth

The upon indicated rates area available for registrations completed by
30 September 2022



EXHIBITION AREA PROPOSAL – from 200 to 299 sqm



EXHIBITION AREA and FLAT RATE SERVICES:

- Indoor Exhibition Area: 165.00 €/sqm
- Outdoor Exhibition Area: 59.00 €/sqm
- Indoor Area for Earth-moving Machinery : 59.00 €/sqm
- Mezzanine Area: 95.00 €/sqm

- Registration fee: 800.00 €
- Fee for Italian Trade marks and Represented Companies: 500.00 €
- Fee for exceeding max height (3.50 mt.):
 - Only stand fitting 500.00 €
 - Stand fitting + Logos 800.00 €
- Mandatory flat rate services: 7.50 €/sqm

The upon indicated rates area available for registrations completed by
30 September 2022

Mandatory **flat rate services** include:



- Basic cleaning of your booth for all the exhibition days



32 Exhibitor badges



Customer invitations



4 Parking pass



- 10 kW daily electricity consumption in your booth



EXHIBITION AREA PROPOSAL – over 300 sqm



EXHIBITION AREA and FLAT RATE SERVICES:

- Indoor Exhibition Area: 165.00 €/sqm
- Outdoor Exhibition Area: 59.00 €/sqm
- Indoor Area for Earth-moving Machinery : 59.00 €/sqm
- Mezzanine Area: 95.00 €/sqm

- Registration fee: 800.00 €
- Fee for Italian Trade marks and Represented Companies: 500.00 €
- Fee for exceeding max height (3.50 mt.):
 - Only stand fitting 500.00 €
 - Stand fitting + Logos 800.00 €
- Mandatory flat rate services: 7.50 €/sqm

The upon indicated rates area available for registrations completed by
30 September 2022

Mandatory **flat rate services** include:



- Basic cleaning of your booth for all the exhibition days



- 40 Exhibitor badges



- Customer invitations



- 5 Parking pass





- 10 kW daily electricity consumption in your booth



ALL INCLUSIVE PACKAGES



PACKAGE TYPE	WHAT IS INCLUDED		SQM	PACKAGE OFFER
ALL INCLUSIVE BASIC PACKAGE	Exhibiting Area Compulsory fee for general exhibition services Registracion fee Venice stand fitting type	 	12	3.150,00 €
			16	3.950,00 €

PACKAGE TYPE	WHAT IS INCLUDED		SQM	PACKAGE OFFER
ALL INCLUSIVE SILVER PACKAGE	Exhibiting Area Compulsory fee for general exhibition services Registracion fee Magic stand fitting type	 	16	4.450,00 €
			32	8.150,00 €
			48	11.850,00 €
			64	15.350,00 €

PACKAGE TYPE	WHAT IS INCLUDED		SQM	PACKAGE OFFER
ALL INCLUSIVE LUXURY PACKAGE	Exhibiting Area Compulsory fee for general exhibition services Registracion fee Deluxe stand fitting type	 	32	11.300,00 €
			48	15.200,00 €
			64	18.650,00 €

SHELL SCHEME STAND

VENICE TYPE €/sqm 68.00 + vat as per law (if due):

1 open side



TECHNICAL DESCRIPTION:

- wooden wall panels, h. 300 cm, painted in white
- wooden white structural panels, dim.50cm, painted in white
- closet, dim. 100x100 cm, with lockable door
- carpeting color related to the exhibition

STAND EQUIPMENT:

- n. 1 counter
- n. 1 stool
- n. 1 table
- n. 3 chairs
- n. 1 structure with 3 shelves (max load 8 Kg each.)
- n.1 coathanger
- n.1 waste basket

GRAPHIC:

Company name on hard panel (150x30cm);
n.1 Graphic panel for each open side

ELECTRICAL SYSTEM:

n. 1 electrical panel 3kW
n. 4 LED spotlights 30W
n. 1 multipin electrical socket 200V

2 open sides



DOTAZIONE IN BASE ALLA DIMENSIONE EQUIPMENT ACCORDING TO STAND SIZE	da 12 a 15,5 mq from 12 to 15,5 sqm	da 16 a 31,5 mq from 16 to 31,5 sqm	da 32 a 47,5 mq from 32 to 47,5 sqm	da 48 a 67,5 mq from 48 to 67,5 sqm
Ripostiglio / Closet	/	1x1	2x1	3x1
Bancone / counter	1	1	2	3
Sgabello / Stool	1	1	2	3
Tavolo / Table	1	1	2	3
Sedie / Chairs	2	3	6	9
n.3 mensole su struttura / n.3 shelves on structure	1	1	2	3
Appendino / Coathanger	1	1	1	2
Multipresa / Electrical socket	1	1	2	3
Faretti a led / Led spotlights	Un faretto ogni 4 mq / One spotlight every 4 sqm			
Ragione sociale / Company Name dim. 150x30 cm	Ragione Sociale sopra ogni fascione / Company Name on every fascia board			

Available for areas of 16 sqm or multiples of 16 - Example pertaining to a stand of 16 sqm

Images and colors are just an example

SHELL SCHEME STAND

MAGIC TYPE €/sqm 77.00 + vat as per law (if due)

1 open side



2 open sides



TECHNICAL DESCRIPTION:

- wooden wall panels, h. 300 cm, painted in white
- wooden white structural panels, dim.50cm, painted in white
- closet, dim. 100x100 cm, with lockable door
- carpeting color related to the exhibition

STAND EQUIPMENT:

- n.1 counter
- n.1 stool
- n.1 table
- n. 3 chairs
- n. 1 structure with 3 shelves (max load 8 Kg each)
- n.1 wastebasket
- n.1 coathanger

GRAPHIC:

- Company name on hard panel (150x30cm);
- n.1 Graphic panel for each open side

ELECTRICAL SYSTEM:

- n.1 electrical panel 3 kW
- n.4 LED spotlights 30W
- n.1 Multipin electrical socket 220V

DOTAZIONE IN BASE ALLA DIMENSIONE EQUIPMENT ACCORDING TO STAND SIZE	da 12 a 15,5 mq from 12 to 15,5 sqm	da 16 a 31,5 mq from 16 to 31,5 sqm	da 32 a 47,5 mq from 32 to 47,5 sqm	da 48 a 67,5 mq from 48 to 67,5 sqm
Ripostiglio / Closet	/	1x1	2x1	3x1
Bancone / counter	1	1	2	3
Sgabello / Stool	1	1	2	3
Tavolo / Table	1	1	2	3
Sedie / Chairs	2	3	6	9
n.3 mensole su struttura / n.3 shelves on structure	1	1	2	3
Appendino / Coathanger	1	1	1	2
Multipresa / Electrical socket	1	1	2	3
Faretti a led / Led spotlights	Un faretto ogni 4 mq / One spotlight every 4 sqm			
Ragione sociale / Company Name dim. 150x30 cm	Ragione Sociale sopra ogni fascione / Company Name on every fascia board			

Available for areas of 16 sqm or multiples of 16 - Example pertaining to a stand of 16 sqm

Images and colors are just an example

SHELL SCHEME STAND

EXTRA TYPE €/sqm 99.00 + vat as per law (if due):

1 open side



TECHNICAL DESCRIPTION:

- wooden wall panels, h. 300 cm, painted in white
- wooden white structural panels, dim.50cm, painted in white
- closet, dim. 100x100 cm, with lockable door
- carpeting color related to the exhibition
- structure with three crystal panels

STAND EQUIPMENT:

- n.1 counter
- n.1 stool
- n.1 table
- n. 3 chairs
- n. 1 structure with 3 shelves (max load 8 Kg each)
- n.1 waste basket
- n.1 coathanger

GRAPHIC:

- Company name on hard panel (150x30cm);
- n.1 Graphic panel for each open side

ELECTRICAL SYSTEM:

- n.1 electrical panel 3 kW
- n.4 LED spotlights 30W
- n.4 built-in spotlight every open side
- n.1 multipin electrical socket 220V

2 open sides



DOTAZIONE IN BASE ALLA DIMENSIONE EQUIPMENT ACCORDING TO STAND SIZE	da 12 a 15,5 mq from 12 to 15,5 sqm	da 16 a 31,5 mq from 16 to 31,5 sqm	da 32 a 47,5 mq from 32 to 47,5 sqm	da 48 a 67,5 mq from 48 to 67,5 sqm
Ripostiglio / Closet	/	1x1	2x1	3x1
Bancone / counter	1	1	2	3
Sgabello / Stool	1	1	2	3
Tavolo / Table	1	1	2	3
Sedie / Chairs	2	3	6	9
n.3 mensole su struttura / n.3 shelves on structure	1	1	2	3
Appendino / Coathanger	1	1	1	2
Multipresa / Electrical socket	1	1	2	3
Faretti a led / Led spotlights	Un faretto ogni 4 mq / One spotlight every 4 sqm			
Ragione sociale / Company Name dim. 150x30 cm	Ragione Sociale sopra ogni fascione / Company Name on every fascia board			

Available for areas of 16 sqm or multiples of 16 - Example pertaining to a stand of 16 sqm

Images and colors are just an example

SHELL SCHEME STAND

DELUXE OPTION



Available in 3 surface options:

STAND 32 sqm - € 5,600.00 + vat as per law (if due)

STAND 48 sqm - € 7,300.00 + vat as per law (if due)

STAND 64 sqm - € 8,400.00 + vat as per law (if due)

Images and colors are just an example - *Example pertaining to a stand of 64 sqm*

TECHNICAL DESCRIPTION

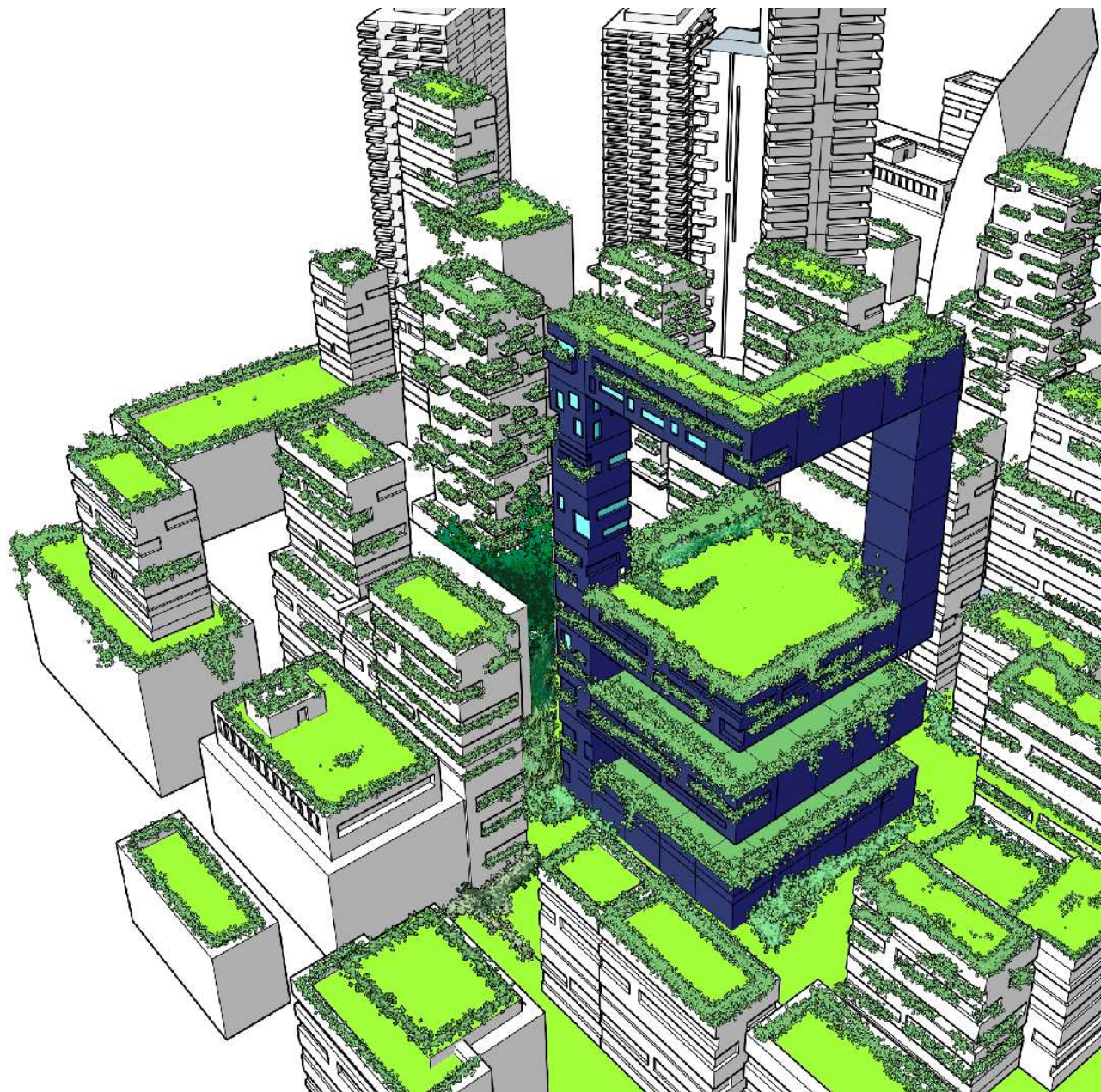
- Wooden white walls h 300 cm high
- Coloured Fascia board 100 cm high (*) with graphic
- Separation element with mesh graphics
- Storage room 400x100 cm with lockable door and graphics
- Open office area dim. 400x200cm
- Platform with carpet (carpeting and painting colors related to the exhibition)

STAND EQUIPMENT

- n.1 rectangular table with 6 chairs
- n.1 desk con 2 stools
- n.1 bookcase
- n.1 waste basket
- n.1 coathanger
- n.9/11 LED spotlights 30W
- n.2/3 multipin electrical sockets 220V
- n.1 electrical panel 3 kW

GRAPHIC

- n.1 grafica on the desk
- n.1 grafica in pvc on the storage room
- n.1 mesh graphic
- n.3 graphics on hard panel for each fascia board side



www.madeexpo.it

BOLOGNA OPERATIVE OFFICE :

Via di Corticella 89
40128 Bologna - Italy
Tel.: +39 051 095941

MILAN OPERATIVE OFFICE :

S.S. del Sempione 28
20017 Rho (Milano) - Italy
Tel.: +39 02 49971

MADE expo is an initiative by MADE eventi Srl, a company of Fiera Milano Spa and Federlegno Arredo Eventi SpA

